

# GH493



# part Number	Hose i.D.		Hose O.D.		Maximum Operating Pressure		Maximum Burst pressure		Minimum Bend Radius		Weight	
	mm	in	mm	in	bar	psi	bar	psi	mm	in	kg/m	lbs/ft
GH493-6	9.7	0.38	20.1	0.79	448.0	6500	1792.0	26000	62.0**	2.50**	0.70	0.47
					280.0	4000*	1120.0	16000*	125.0	5.00		
GH493-8	12.7	0.50	23.4	0.92	415.0	6000	1660.0	24000	90.0**	3.50**	0.88	0.59
					280.0	4000*	1120.0	16000*	180.0	7.00		
GH493-10	16.0	0.63	28.2	1.11	415.0	6000	1660.0	24000	100.0**	4.00**	1.03	0.69
					280.0	4000*	1120.0	16000*	200.0	8.00		
GH493-12	19.1	0.75	30.5	1.20	380.0	5500	1520.0	22000	120.0**	4.75**	1.37	0.92
									240.0	9.50		
GH493-16	25.4	1.00	37.6	1.48	350.0	5100	1400.0	20400	150.0**	6.00**	1.82	1.22
									300.0	12.00		
GH493-20	31.8	1.25	46.5	1.83	310.0	4500	1240.0	18000	210.0**	8.25**	2.44	1.64
									420.0	16.50		
GH493-24	38.1	1.50	53.8	2.12	275.0	4000	1100.0	16000	250.0**	10.00**	3.12	2.10
									500.0	20.00		
GH493-32	50.8	2.00	67.1	2.64	275.0	4000	1100.0	16000	320.0**	12.50**	4.18	2.81
									640.0	25.00		

**Construction (호스구조)**

Synthetic rubber tube (합성고무 튜브)  
 4-heavy spiral wire reinforcement (4 고 강력 나선타입 강선 보강)  
 Synthetic DURA-TUFF™ rubber cover (DURA-TUFF™ 합성고무 커버)

**Operating Temperature Range: (사용온도범위)**

-40°C to +127°C [-40°F to +260°F]

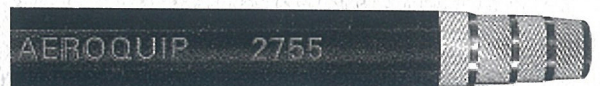
**Application (호스적용범위)**

Four wire hose for high pressure hydraulic systems with petroleum and water-base fluids.(석유와 물을 기반으로 한 고압 유압 시스템을 위한 4 와이어 호스)

\*Pressure rating with reusable fittings (재 사용 피팅을 사용 했을 때 압력 범위), \*\*1/2 SAE Bend Radius with TTC12 fittings.(TTC12 피팅을 사용 1/2 굽힘 반경)

# EN 856 4SH / Four Spiral Wire

# 2755



# part Number	Hose i.D.		Hose O.D.		Maximum Operating Pressure		Maximum Burst pressure		Minimum Bend Radius		Weight	
	mm	in	mm	in	bar	psi	bar	psi	mm	in	kg/m	lbs/ft
2755-06	9.5	0.38	21.4	0.84	490	7130	1960	28510	180.0	7.09	0.80	
2755-08	12.7	0.50	24.6	0.97	420	6110	1680	24440	230.0	9.06	0.92	
2755-10	15.9	0.62	28.2	1.11	420	6110	1680	24440	250.0	9.84	1.00	
2755-12	19.0	0.75	32.2	1.27	380	5530	1520	22110	300.0	11.81	1.50	
2755-16	25.4	1.00	39.7	1.56	320	4650	1280	18620	320.0	12.60	2.15	

**Construction (호스구조)**

Synthetic rubber tube (합성고무 튜브)  
 4-heavy spiral wire reinforcement (4 고 강력 나선타입 강선 보강)  
 Synthetic DURA-TUFF™ rubber cover (DURA-TUFF™ 합성고무 커버)

**Operating Temperature Range: (사용온도범위)**

-40°C to +100°C [-40°F to +212°F]

**Application (호스적용범위)**

Four wire hose for high pressure hydraulic systems with petroleum and water-base fluids.(석유와 물을 기반으로 한 고압 유압 시스템을 위한 4 와이어 호스)